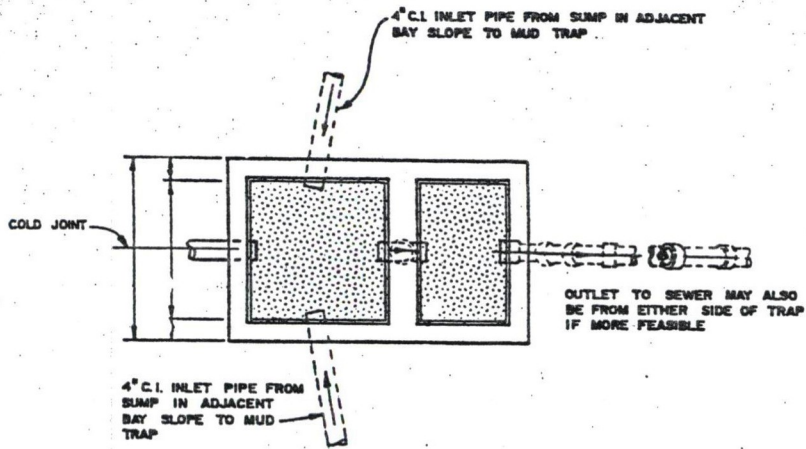
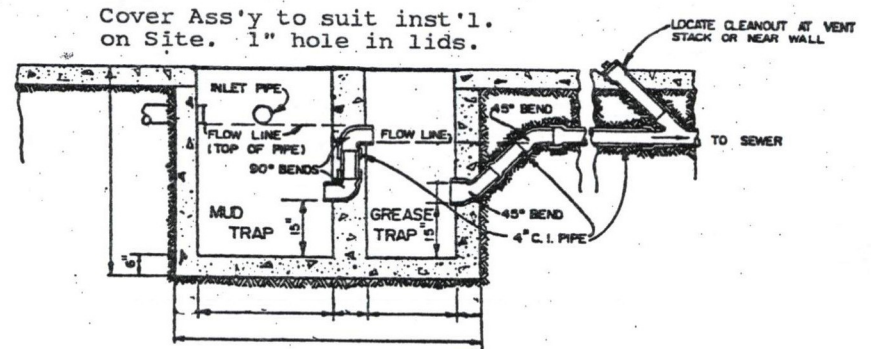


MINIMUM GREASE TRAP SIZE IS 750 GALLON



PLAN

SCALE:



SECTION

SCALE:

Note: TOP OF BAFFLE WALL SHALL BE LOCATED WITHIN 3-INCHES OF GREASE TRAP LID

SAMPLING MANHOLE required with all Grease trap instalations.

GREASE TRAP
SALT LAKE CITY SUBURBAN SANITARY DISTRICT NO. 1
August 1987 Size 2006